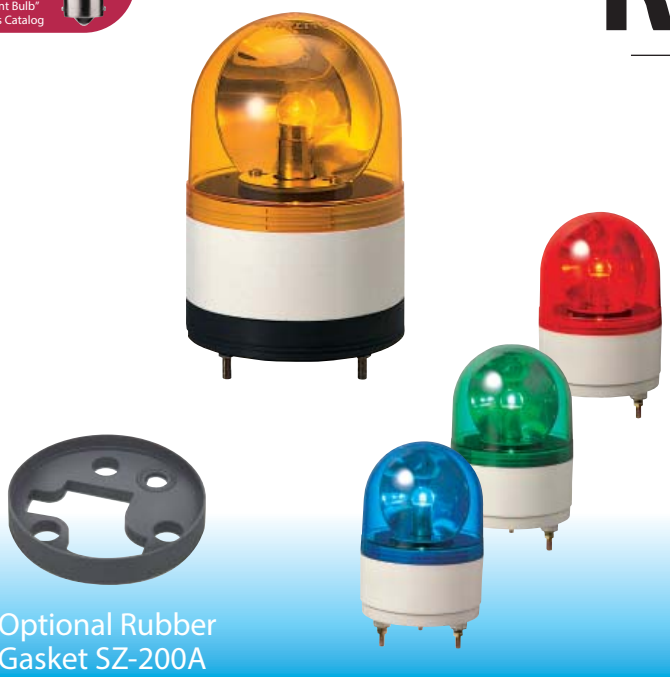


Model **DEB** LED Lamp  
**Recommended Product**  
 For more details on Model DEB Refer to the "Replacement Bulb" Section at the end of this Catalog



# RH-A/ RK-A

## Revolving Warning Light



Optional Rubber Gasket SZ-200A

- Bulb**
- IP55** (with SZ-200A)
- 1 Alarm Sound** (RHB & RKB)
- 90dB at 1m** (RHB & RKB)
- Terminal**
- Ø100**

## Compact Revolving Warning Light featuring high durability and easy wiring with terminal block.

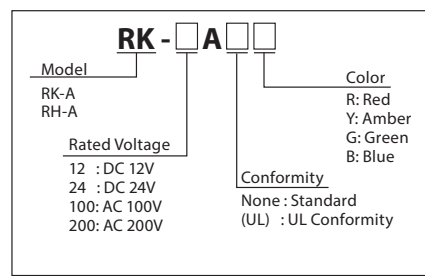
### FEATURES

- Indoors allows upright, inverted, and sideways installation; Outdoors allows upright installation only.
- Has the CE mark and conforms to the requirements (for 12V, 24V type only) for the EC directive.
- Dome is made from superior impact and heat resistant polycarbonate resin.
- Main body is made of impact and heat-resistant polycarbonate resin.
- Built-in audible alarm for models RHB/RKB at a sound of 90dB (at 1m).
- Rotating parabolic reflector to enhance visibility from a distance.
- Is UL Listed for 24V, 120V, and 240V types (File No. E215660)
- Vibration-resistant automobile bulb for extended bulb life.
- Available Colors are Red, Amber, Green, and Blue.
- Utilizes a terminal block for easy wiring.

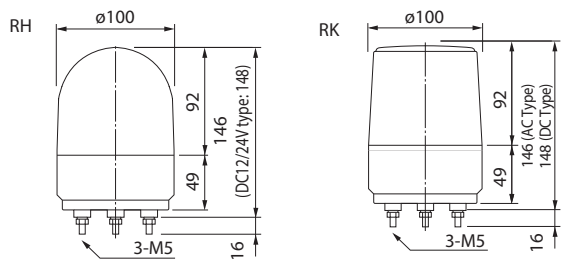
AVAILABLE BY SPECIAL ORDER (RH TYPE)

- Body Color: Silver

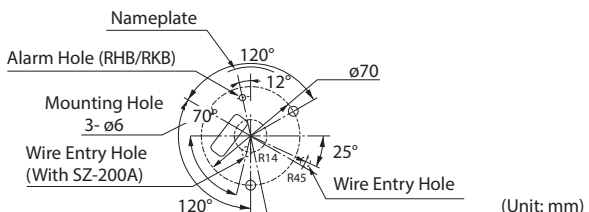
### How to Order



### Dimensions



### Mounting Dimensions



### Specifications

Model	Rated Voltage	Current Consumption	Flash Rate (fpm)	Bulb		Mass	
				Ratings	Repl. No.		
RH/RHB-12A	DC 12V	0.8A	170	12V 10W	9	400g	
RH/RHB-24A (UL)	DC 24V	0.5A		24V 10W	10		
RH/RHB-120A (UL)	AC 120V	0.1A		12V 5W	12	600g	
RH/RHB-200A	AC 200V	0.03A		24V 10W	10	400g	
RH/RHB-240A (UL)	AC 240V	0.05A					
RK/RKB-24A (UL)	DC 24V	0.5A		12V 5W	12	600g	
RK/RKB-120A (UL)	AC 120V	0.1A					
RK/RKB-200A	AC 200V	0.03A					
RK/RKB-240A (UL)	AC 240V	0.05A					