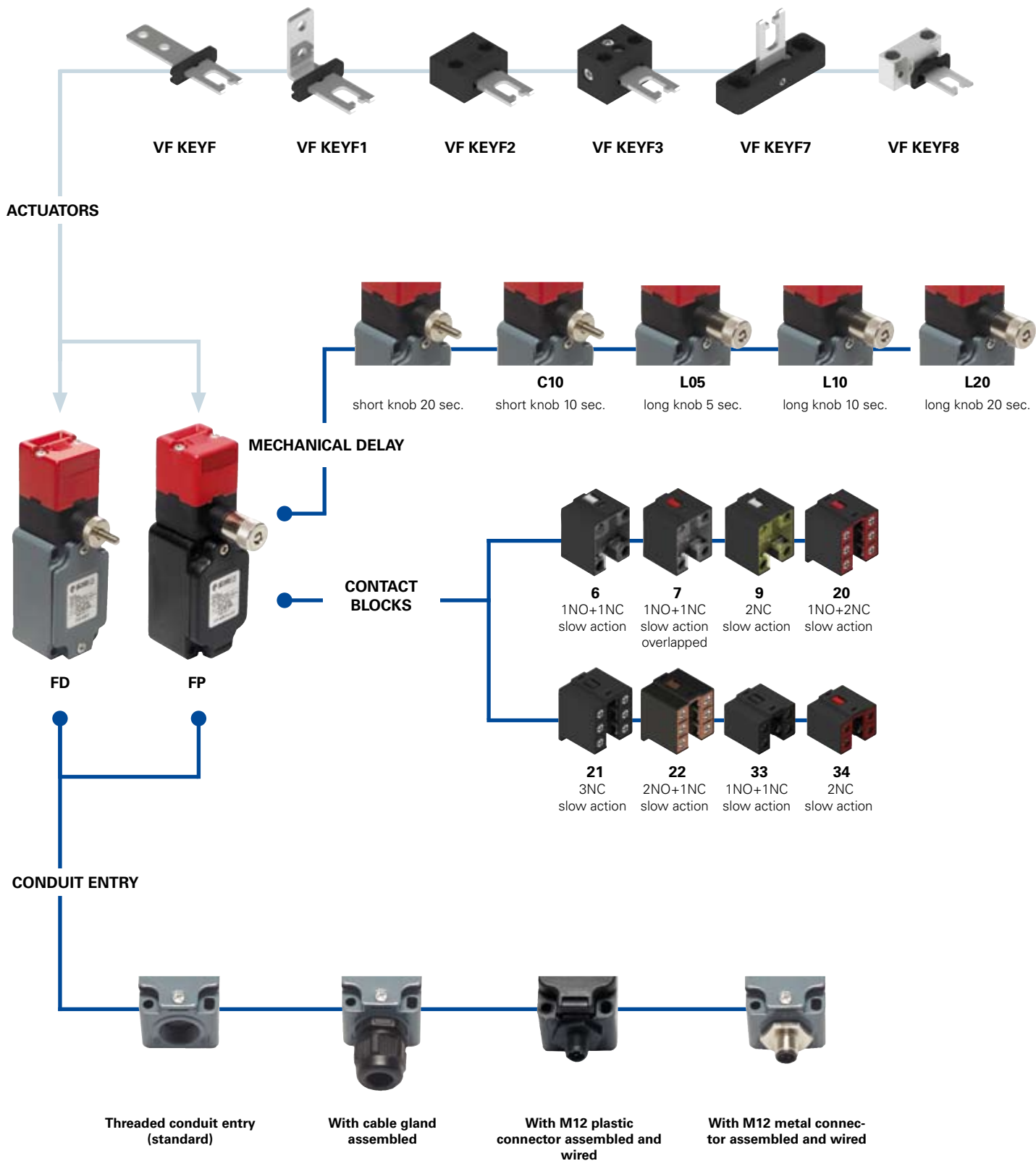


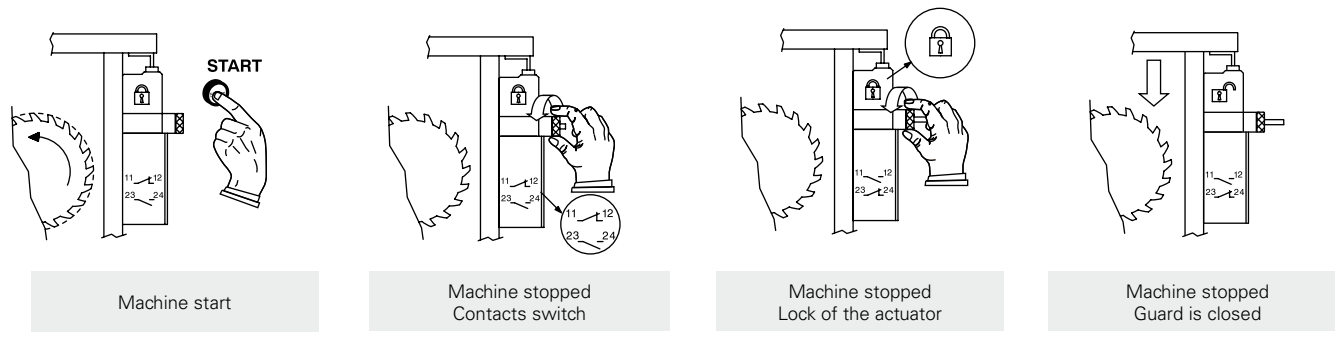
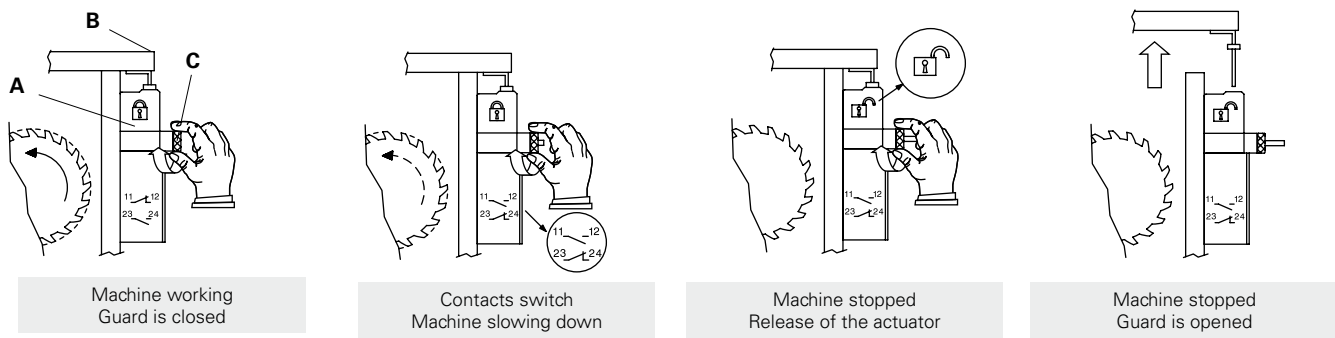
Selection diagram





Working cycle (FP 6R2-F1)

The switch is fixed to the machine body (A), while the stainless steel actuator is fastened to the guard (B). Once installed, the switch will firmly lock the actuator. In order to remove the actuator, the knob (C) has to be rotated. On the first turns the electrical contacts will positively open, then, after about 20 seconds (or 10 seconds depending on the knob version), the actuator will be released. In order to close the guard, the knob must be rotated in the opposite direction. This switch doesn't need power supply or timer and can be easily installed on old machines without important changes in their electrical circuit. The knob (C) may be supplied in a short (standard) or in a long version.



Code structure

Attention! The feasibility of a code number does not mean the effective availability of a product. Please contact our sales office.

article options
FD 6R2-L10F1GM2K50

Housing		Preinstalled cable gland or connectors	
FD	metal housing, one conduit entry		no cable gland or connector (standard)
FP	polymer housing, one conduit entry	K21	with assembled cable gland suitable for Ø 6 to Ø 12 mm cables range
Contact blocks	
6	1NO+1NC, slow action	K50	with assembled 5 poles M12 metal connector
7	1NO+1NC, slow action overlapped
9	2NC, slow action	For the complete list of all combinations, please contact our technical office.	
20	1NO+2NC, slow action	Threaded conduit entry	
21	3NC, slow action		PG 13,5 (standard)
22	2NO+1NC, slow action	M2	M20x1,5
33	1NO+1NC, slow action	Contacts type	
34	2NC, slow action		silver contacts (standard)
Mechanical delay			G silver contacts gold plated 1 µm
	short knob 20 s (standard)	Actuators	
C10	short knob 10 s		without actuator (standard)
L05	long knob 5 s	F	with straight actuator
L10	long knob 10 s	F1	with right-angled actuator
L20	long knob 20 s	F2	with jointed actuator
		F3	with jointed actuator adjustable in two directions
		F7	with jointed actuator adjustable in one direction
		F8	with universal actuator

**Main data**

- Metal housing or polymer housing, one conduit entry
- Protection degree IP67
- 8 contact blocks available
- 6 stainless steel actuators available
- M12 assembled connector versions
- Silver contacts gold plated versions
- Strong actuator locking (1000N)
- Manual actuator unlocking
- Versions with different unlocking delay times

Markings and quality marks:

Approval IMQ:	EG605 (FD series) EG606 (FP series) E131787
Approval UL:	E131787
Approval CCC:	2007010305230000 (FD series) 2007010305230014 (FP series)
Approval EZU:	1010151
Approval GOST:	POCC IT.AB24.B04512

Technical data**Housing**

Housing type FP made of glass-reinforced polymer, self-extinguishing, shock-proof thermoplastic resin and with double insulation

Housing type FD made of metal, coated with baked epoxy powder.

FD and FP series one conduit entry

Protection degree: IP67 according to EN 60529
with cable gland having equal or higher protection degree (electrical contacts)

General data

For safety applications up to SIL 3 / PL e

Safety parameters: see page 7/34
Ambient temperature: from -25°C to +80°C

Version for operation in ambient temperature from -40°C to +80° C on request

Max actuation frequency: 360 operations cycles¹/hour

Mechanical endurance: 500.000 operations cycles¹

Max actuating speed: 0,5 m/s

Min. actuating speed: 1 mm/s

Max holding force: 1000 N

Max backlash of the actuator: 4,5 mm

Driving torque for installation: see pages 7/1-7/12

(1) One operation cycle means two movements, one to close and one to open contacts, as foreseen by EN 60947-5-1 standard..

Cross section of the conductors (flexible copper wire)

Contact blocks 20, 21, 22, 33, 34:	min.	1 x 0,34 mm ²	(1 x AWG 22)
	max.	2 x 1,5 mm ²	(2 x AWG 16)
Contact blocks 6, 7, 9:	min.	1 x 0,5 mm ²	(1 x AWG 20)
	max.	2 x 2,5 mm ²	(2 x AWG 14)

In conformity with standards:

IEC 60947-5-1, EN 60947-5-1, EN 60947-1, IEC 60204-1, EN 60204-1, EN 1088, EN ISO 12100-1, EN ISO 12100-2, IEC 60529, EN 60529, NFC 63-140, VDE 0660-200, VDE 0113, BG-GS-ET-15.

Approvals:

IEC 60947-5-1, UL 508, GB14048.5-2001.

In conformity with requirements requested by:

Low Voltage Directive 2006/95/EC, Machinery Directive 2006/42/EC and Electromagnetic Compatibility 2004/108/EC.

Positive contact opening in conformity with standards:

IEC 60947-5-1, EN 60947-5-1, VDE 0660-206.

⚠ If not expressly indicated in this chapter, for the right installation and the correct utilization of all articles see requirements indicated from page 7/1 to page 7/12.

Electrical data**Utilization categories**

without connector	Thermal current (I _{th}):	10 A	Alternate current: AC15 (50...60 Hz)			
	Rated insulation voltage (U _i):	500 Vac 600 Vdc	U _e (V)	250	400	500
		400 Vac 500 Vdc (contact blocks 20, 21, 22, 33, 34)	I _e (A)	6	4	1
	Rated impulse withstand voltage (U _{imp}):	6 kV	Direct current: DC13			
		4 kV (contact blocks 20, 21, 22, 33, 34)	U _e (V)	24	125	250
	Conditional short circuit current:	1000 A according to EN 60947-5-1	I _e (A)	6	1,1	0,4
	Protection against short circuits:	fuse 10 A 500 V type aM				
	Pollution degree:	3				

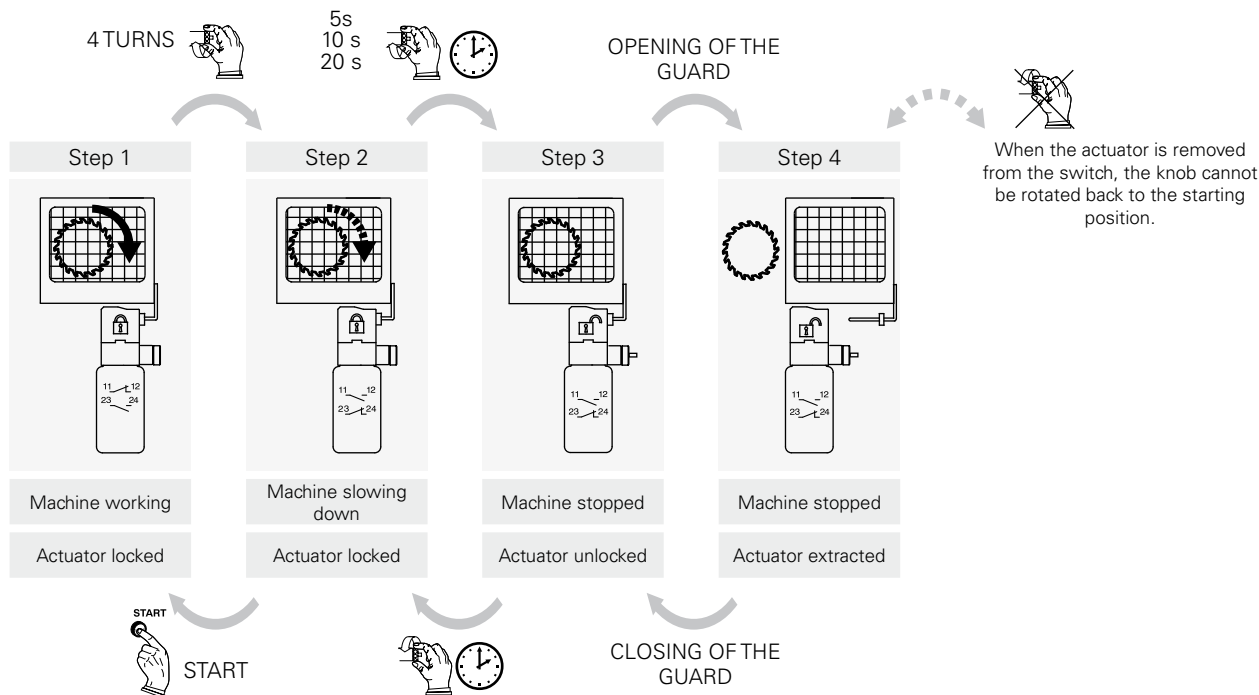
with 4 or 5 poles M12 connector	Thermal current (I _{th}):	4 A	Alternate current: AC15 (50...60 Hz)				
	Rated insulation voltage (U _i):	250 Vac 300 Vdc	U _e (V)	24	120	250	
		Protection against short circuits:	fuse 4 A 500 V type gG	I _e (A)	4	4	4
	Pollution degree:	3	Direct current: DC13				
			U _e (V)	24	125	250	
		I _e (A)	4	1,1	0,4		

with 8 poles M12 connector	Thermal current (I _{th}):	2 A	Alternate current: AC15 (50...60 Hz)				
	Rated insulation voltage (U _i):	30 Vac 36 Vdc	U _e (V)	24			
		Protection against short circuits:	fuse 2 A 500 V type gG	I _e (A)	2		
	Pollution degree:	3	Direct current: DC13				
			U _e (V)	24			
		I _e (A)	2				

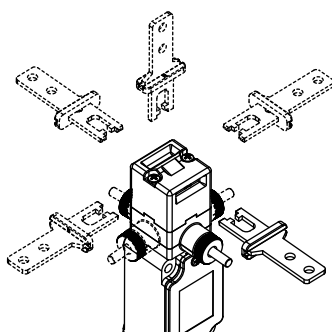


Example of working cycle steps with FD 6R2-F1

These switches are used on machines where the hazardous conditions remain for a while, even after the machine has been switched off, for example because of mechanical inertia of the pulleys, saw disks, mills. This switch has its ideal application where the guard is not open frequently and the installation of a switch with solenoid would be too expensive.

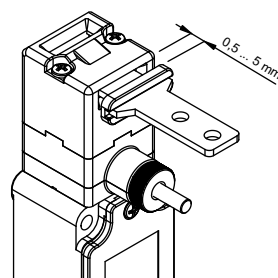


Rotating heads and knobs



The head can be quickly rotated on each of the 4 sides of the switch by unfastening the two fixing screws. The mechanical delay device can be rotated in 90° steps as well. This enables the switch to assume 32 different configurations.

Actuator regulation zone

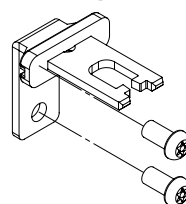


This switch has a wide backlash of the actuator into the head (4,5 mm) for an easier installation. With closed door, check that the actuator doesn't knock straight against the head of the switch; it must be in the adjustment zone (0,5...5 mm).

Limits of utilization

Do not use where dust and dirt may penetrate in any way into the head and deposit there, in particular where metal dust, concrete or chemicals are spread.
Do not use where explosive or inflammable gas is present.
Use Atex products in environments with explosion hazard (see page 2/137).

Safety screws for actuators



These new screws have tamper-resistant Torx buttonheads. Devices fixed with this kind of screws cannot be removed or tampered by common tools. See accessories page 6/5.

Data type approved by IMQ, CCC and EZU

Rated insulation voltage (Ui): 500 Vac
400 Vac (for contact blocks 20, 21, 22, 33, 34)
Thermal current (Ith): 10 A
Protection against short circuits: fuse 10 A 500 V type aM
Rated impulse withstand voltage (U_{imp}): 6 kV
4 kV (for contact blocks 20, 21, 22, 33, 34)
Protection degree: IP67
MV terminals (screw clamps)
Pollution degree 3
Utilization category: AC15
Operation voltage (Ue): 400 Vac (50 Hz)
Operation current (Ie): 3 A
Forms of the contact element: Zb, Y+Y, Y+Y+X, Y+Y+Y, Y+X+X
Positive opening of contacts on contact block 6, 7, 9, 20, 21, 22, 33, 34

Data type approved by UL

Utilization categories Q300 (69 VA, 125-250 Vdc)
A600 (720 VA, 120-600 Vac)
Data of the housing type 1, 4X "indoor use only", 12, 13
For all contact blocks use 60 or 75 °C copper (Cu) conductor and wire size No. 12-14 AWG. Terminal tightening torque of 7,1 lb in (0.8 Nm).
In conformity with standard: UL 508

Please contact our technical service for the list of approved products.

In conformity with standards: EN 60947-1, EN 60947-5-1+ A1:2009, fundamental requirements of the Low Voltage Directive 2006/95/CE.

Please contact our technical service for the list of approved products.

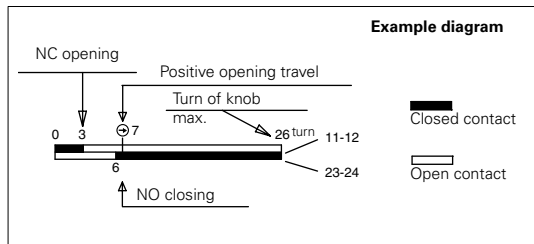
Dimensional drawings

		Polymer housing Without actuator	Metal housing Without actuator	Metal housing Without actuator
Contacts type:				
Contact blocks				
6	L	FP 6R2 (1NO+1NC)	FD 6R2 (1NO+1NC)	FD 6R2-L10 (1NO+1NC)
7	LO	FP 7R2 (1NO+1NC)	FD 7R2 (1NO+1NC)	FD 7R2-L10 (1NO+1NC)
9	L	FP 9R2 (2NC)	FD 9R2 (2NC)	FD 9R2-L10 (2NC)
20	L	FP 20R2 (1NO+2NC)	FD 20R2 (1NO+2NC)	FD 20R2-L10 (1NO+2NC)
21	L	FP 21R2 (3NC)	FD 21R2 (3NC)	FD 21R2-L10 (3NC)
22	L	FP 22R2 (2NO+1NC)	FD 22R2 (2NO+1NC)	FD 22R2-L10 (2NO+1NC)
33	L	FP 33R2 (1NO+1NC)	FD 33R2 (1NO+1NC)	FD 33R2-L10 (1NO+1NC)
34	L	FP 34R2 (2NC)	FD 34R2 (2NC)	FD 34R2-L10 (2NC)
Min. force		10 N (18 N)	10 N (18 N)	10 N (18 N)

All measures are in turns of knob

How to read travel diagrams

All measures are in turns of knob



IMPORTANT:

NC contact has to be considered with inserted and blocked actuator and with the knob rotated anti-clockwise up to the end of the travel. In safety applications it is necessary to activate the switch at least up to the positive opening point indicated in the diagrams with the symbol ⊕. Operate the switch at least with the positive opening force, indicated between brackets, below each article, next the value of minimum force.



Stainless steel actuators

IMPORTANT: These actuators must be used with FD, FP, FL, FC or FS series only (e.g. FD 6R2).

Article	Description
VF KEYF	Straight actuator

Article	Description
VF KEYF1	Right-angled actuator

Article	Description
VF KEYF2	Jointed actuator

Article	Description
VF KEYF3	Jointed actuator adjustable in two directions

The actuator can flex in four directions for applications where the door alignment is not precise.

Actuator adjustable in two directions for doors with reduced dimensions.

Article	Description
VF KEYF7	Jointed actuator adjustable in one direction

Actuator adjustable in one direction for doors with reduced dimensions.

Article	Description
VF KEYF8	Universal actuator

Joined and two directions adjustable actuator for doors with reduced dimensions. The actuator has two couples of fixing holes and it is possible to rotate by 90° the actuator-working plan.

Accessories

Article	Description
VF KB1	Actuator entry locking device

Padlockable device to lock the actuator entry in order to prevent from the accidental closing of the door behind operators while they are inside the machine. It cannot be used for switches with plastic heads. Padlocks diameter holes 9 mm

Items with code on the **green** background are available in stock