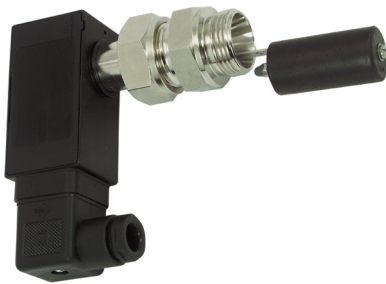


Product Information

NW3-020/025HM / K

Level Switch NW3



- Highly reproducible
- Normally open or normally closed contact
- Plug connection

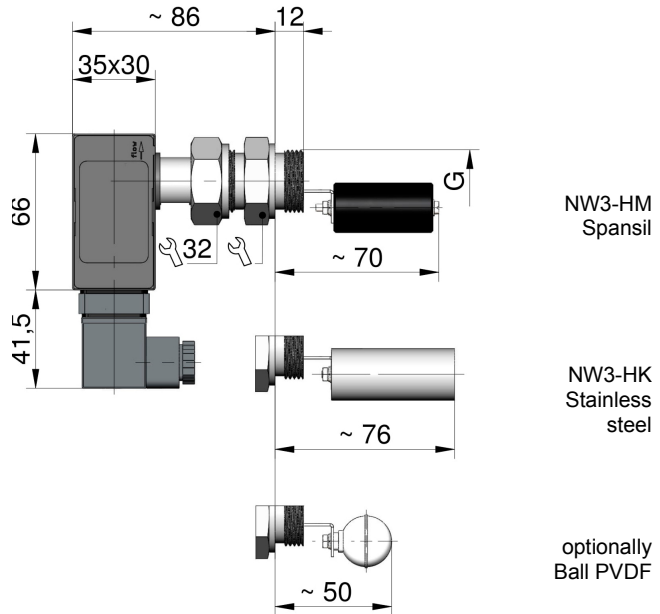
Characteristics

Mechanical level monitor for fluid media, with contact-free triggering of a reed contact.

Technical data

| | | |
|-------------------------------------|-----------------------------------------------------------------------------------------------------------|----------------------------------------------------------------------------------|
| Switch | reed switch | |
| Process connection | male thread G 3/4 A; G 1 A | |
| Density of medium | Spansil float | □0.7 g/cm ³ |
| | Stainless steel float | □0.9 g/cm ³ |
| Pressure resistance | Spansil float | PN 25 bar |
| | Stainless steel float | PN 10 bar |
| Medium temperature | -20..+110 °C | |
| Ambient temperature | -20..+70 °C | |
| Media | water, oils (aggressive media available on request) | |
| Wiring | 'normally open' or 'normally closed' No. 0.442 | |
| | | |
| Switching voltage | max. 230 V AC | |
| Switching current | max. 1 A | |
| Switching capacity | Max. 50 VA | |
| Protection class | 2 - safety insulation | |
| Ingress protection | IP 65 | |
| Electrical connection | plug DIN 43650-A / ISO 4400 | |
| Materials medium-contact | <i>Brass construction:</i> CW614N nickelled, 1.4301, 1.4571, Spansil (NBR), hard ferrite, NBR | <i>Stainless steel construction:</i> 1.4305, 1.4571, Hard ferrite, FKM |
| Non-medium-contact materials | ABS, PA, NBR | |
| Weight | 0.35 kg | |
| Installation location | horizontal installation | |

Dimensions



Handling and operation

- When tightening the union nut, the connection piece must be countered using an open-ended spanner (SW 19).
- It must be ensured that the values given for voltage, current, and power are not exceeded.
- When switched on, a load must be connected in series.
- The electrical details apply to ohmic loads. Capacitive, inductive and lamp loads must be operated using a protective circuit.
- Not suitable for use in media with ferritic particles.
- Switch position is fixed at factory.

Ordering code

NW3 - 1. 2. 3.

| | | |
|-------------------------------|-----|-----------------------------|
| 1. Connection size | | |
| | 020 | threaded connection G 3/4 A |
| | 025 | threaded connection G 1 A |
| 2. Process connection | | |
| | H | screw-in thread |
| 3. Connection material | | |
| | M | brass |
| | K | stainless steel |

Options

- Connection for round plug connector M12x1, 4-pole
- Float ball PVDF
- Float cylinder stainless steel
- Signal lamp red or red/green with plug DIN 43650-A